

Key outcomes for Financial Year 2023/2024

The GROW Initiative is working towards a future where **everyone who wants to work has the opportunity and support to work.**

GROW is a place-based, local, trusted, independent, social procurement intermediary in the G21 region and a certified Social Enterprise. GROW supports organisations to adapt their business processes to deliver local social value, impact and outcomes in the G21 region.

GROW has a priority focus on supporting employment pathways and job opportunities for people experiencing long-term unemployment and supporting suburbs with higher levels of disadvantage in our region, through enabling targeted and supported employment opportunities.

BE INCLUSIVE



164
PAID
EMPLOYMENT
OUTCOMES
FOR PRIORITY
JOBSEEKERS[^]

GROW's direct involvement with a range of GROW Partners across FY23-24 resulted in 164 paid employment outcomes for priority jobseekers[^], including apprenticeships and traineeships.

A total of 44 jobs were created for people living in priority suburbs Corio, Norlane, Whittington and parts of Colac - areas with high unemployment and significant barriers such as limited employment opportunities, support services, and public transport options.

GROW Partners support and create employment pathways that can lead to employment outcomes through:

- traineeship programs
- inclusive hiring practices
- community engagement
- performance reviews and check-ins
- training and upskilling

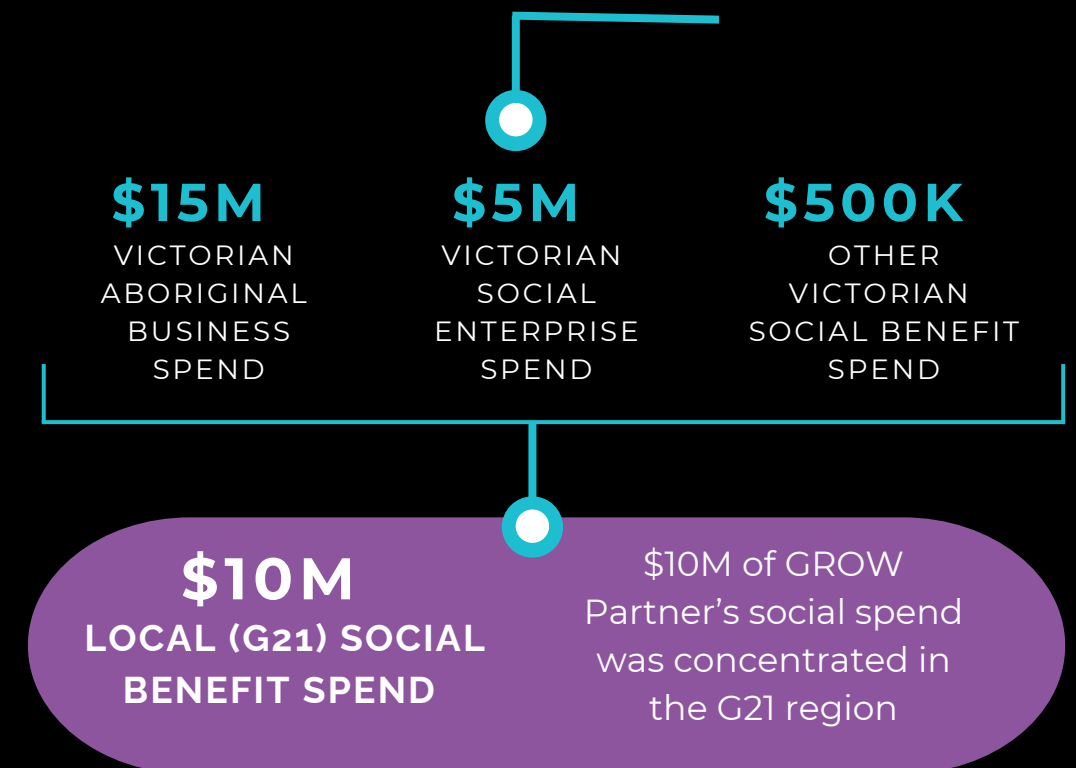


LOCAL & SOCIAL SPEND

The impact of GROW's activities reverberate throughout the local economy and community. REMPLAN Impact Modelling shows that for every dollar spent with G21 suppliers, \$2.04 is generated in the local economy*.

GROW Partners reported that approximately \$10M of their combined social spend was contributed into the G21 region. Using the REMPLAN Impact Model, this equates to over over \$21 million generated in the local economy.

SOCIAL BENEFIT SPEND



For every dollar spent with local social benefit suppliers, \$2.04 was generated in the local economy resulting in...

\$21M FLOW-ON BENEFITS IN THE REGION*

[^] A Victorian priority jobseeker must be one of the following:

- long-term unemployed (unemployed for 12 months or more)
- at risk of long-term unemployment:
 - working less than 12 hours per week in casual, temporary, or intermittent work
 - experiencing employment barriers (e.g. not completing secondary education, low English language proficiency)
- A young person aged 15 to 24, is also a considered a priority jobseeker if
 - unemployed
 - working less than 12 hours in casual, temporary, or intermittent work
 - not in full time study

*Estimations of the flow-on benefit of expenditure to the local economy was calculated by PaperGIANT using the REMPLAN impact model, as cited in GROW Strategic Direction Final Report, October 2022